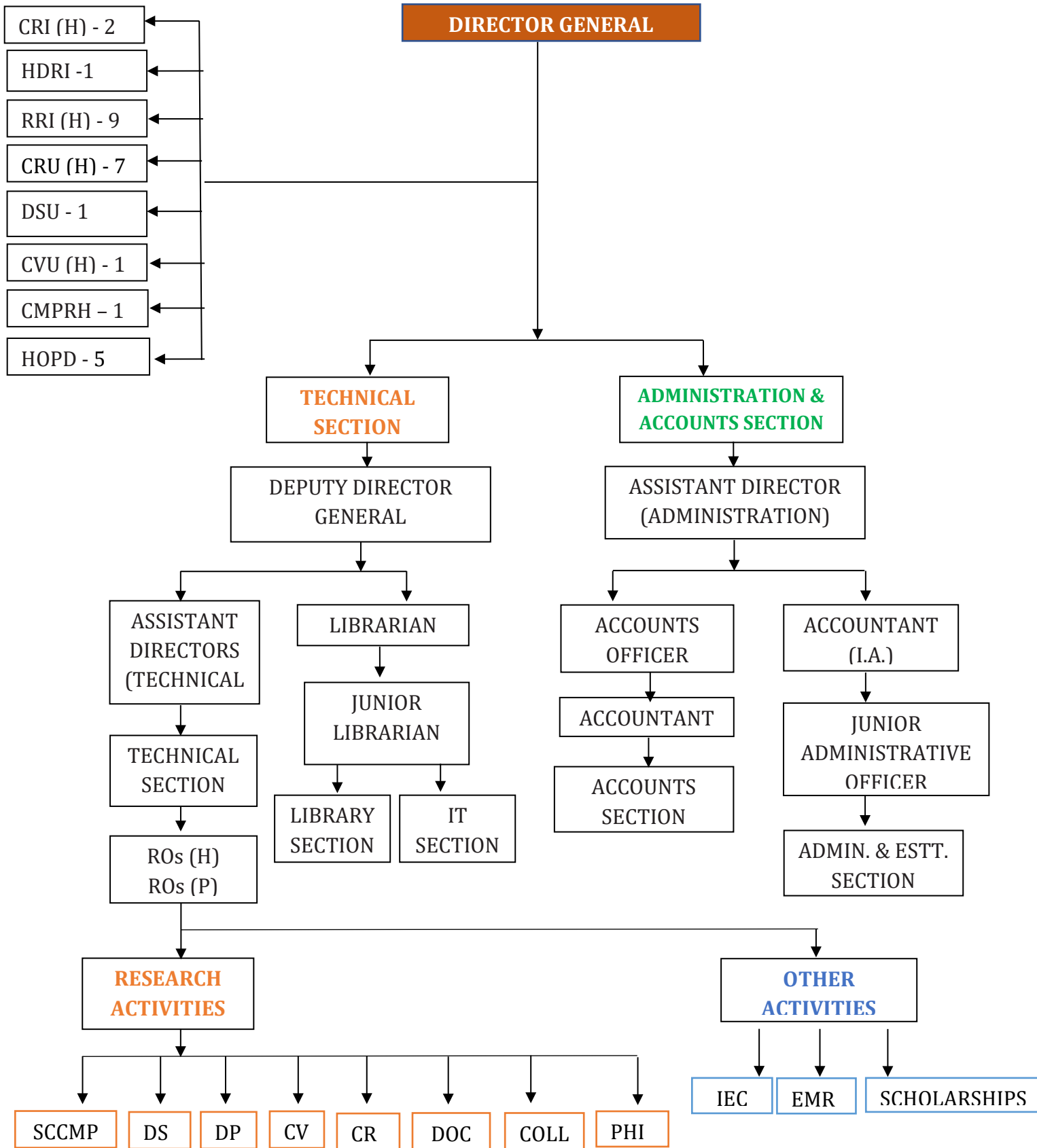


# Central Council for Research in Homoeopathy

(Updated on 11.11.2016)



## ABBREVIATIONS

CCRH	Central Council for Research in Homoeopathy
CMPRH	Centre of Medicinal Plants Research in Homoeopathy
COLL	Collaborative studies
CR	Clinical Research
CRI (H)	Central Research Institute for Homoeopathy
CRU (H)	Clinical Research Unit for Homoeopathy
CV	Clinical Verification
CVU	Clinical Verification Unit
DOC	Documentation & Publication
DP	Drug Proving
DPRU	Drug Proving Research Unit
DS	Drug Standardization
DSU	Drug Standardisation Unit
EC	Extension Centers
EMR	Extra Mural Research
HDRI	Homoeopathic Drug Research Institute
HOPD	Homoeopathic Out Patient Department
IEC	Information Education Communication
PHI	Public Health Initiatives
RO (H)	Research Officer (Homoeopathy)
RO (P)	Research Officer (Pharmacognosy)
RRI (H)	Regional Research Institute for Homoeopathy
SCCMP	Survey, Collection and Cultivation of Medicinal Plants

\*\*\*